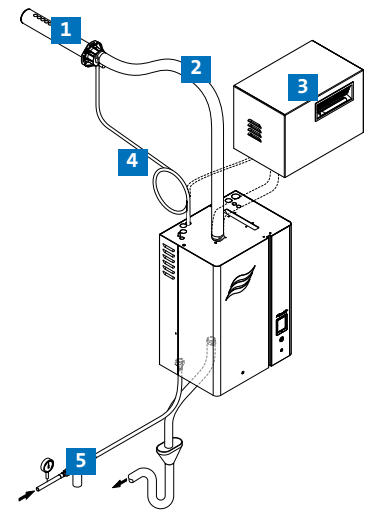


Typical system overview

- Replaceable steam cylinder
- Internal PI humidity controller
- Remote indication board
- Analog output for signalling actual steam capacity
- Touch screen control panel
- Self-diagnostic system
- Real-time clock
- BMS connectivity - Modbus RTU

Accessories

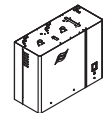
- 1 Steam distribution system for duct installation
- 2 Steam distribution hose
- 3 Ventilation unit for direct room humidification
- 4 Condensate hose
- 5 Filter valve



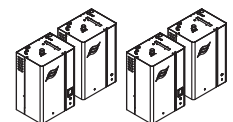
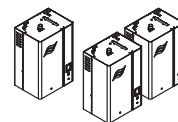
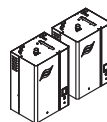
Options

- IP55 rated outdoor enclosure
- Condair OptiSorp steam distribution system
- Pressure compensation set up to 10,000 Pa
- Humidity sensors and hygrometers
- Condair online remote diagnostics
- BMS connectivity - LonWorks - Lon standards certified, BACnet MS/TP (master/slave) or BACnet IP - BTL certified

Technical data



Housing sizes		Small				Medium						Large				
Product reference		EL 5	EL 8	EL 10	EL 15	EL 20	EL 24	EL 30	EL 35	EL 40	EL 45	EL 50	EL 60	EL 70	EL 80	EL 90
Dimensions WxHxD	mm	420 x 670 x 370				530 x 780 x 406						1,000 x 780 x 406				
Operating weight	kg	40.0				66.0						132.0				
Heating voltage		Maximum steam output														
400V 3Ph 50-60Hz	kg/h	5.0	8.0	10.0	15.0	20.0	24.0	30.0	35.0	40.0	45.0	50.0	60.0	70.0	80.0	90.0
230V 1Ph 50-60Hz	kg/h	5.0	8.0	10.0	-	-	-	-	-	-	-	-	-	-	-	-
Control voltage		230V 1Ph 50-60Hz														
Conformity		CE, VDE														



Housing sizes		2x Medium Master-Slave					3x Medium Master-Slave			4x Medium Master-Slave		
Product reference		EL 50	EL 60	EL 70	EL 80	EL 90	EL 105	EL 120	EL 135	EL 152	EL 160	EL 180
Dimensions WxHxD	mm	2x 530 x 780 x 406					3x 530 x 780 x 406			4x 530 x 780 x 406		
Operating weight	kg	132.0					198.0			264.0		
Heating voltage		Maximum steam output										
400V 3Ph 50-60Hz	kg/h	2x 25.0	2x 30.0	2x 35.0	2x 40.0	2x 45.0	3x 35.0	3x 40.0	3x 45.0	4x 38.0	4x 40.0	4x 45.0
230V 1Ph 50-60Hz	kg/h	-	-	-	-	-	-	-	-	-	-	-
Control voltage		230V 1Ph 50-60Hz										
Conformity		CE, VDE										