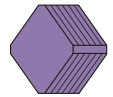
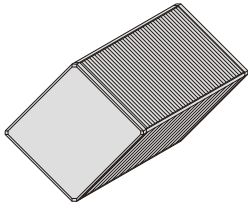


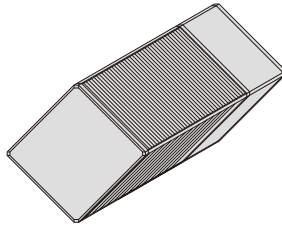
# Types and execution possibilities



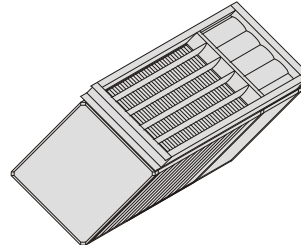
PWT 10



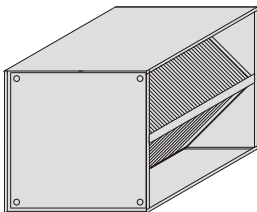
PWT 20



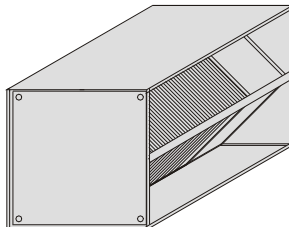
PWT 25



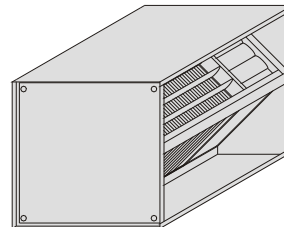
PWT 30



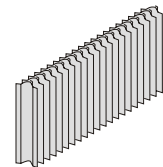
PWT 40



PWT 60



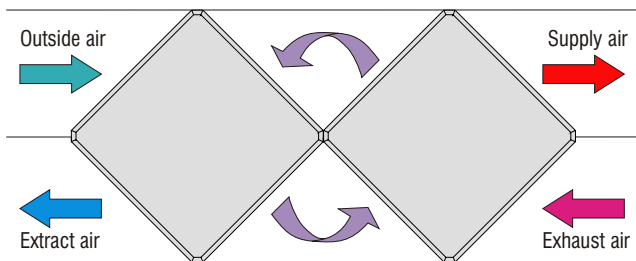
Drop eliminator



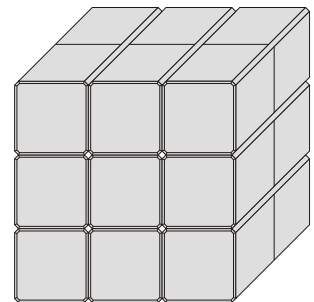
All housings are equipped with condensate drain-off.

## Cross-/counterflow arrangement incorporating two PWTs

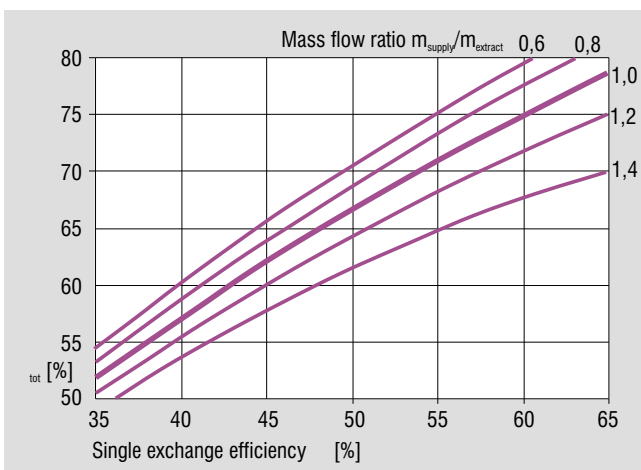
Two heat-exchanger groups can be arranged in a cross-/counterflow pattern to increase efficiency.



Any required group length and edge lengths up to 3000 mm can be supplied, thanks to modular structure.



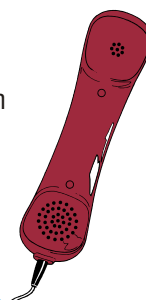
## Diagram for determination of efficiency with two PWTs in a cross-/counterflow pattern



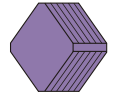
Other types and sizes

available on request!

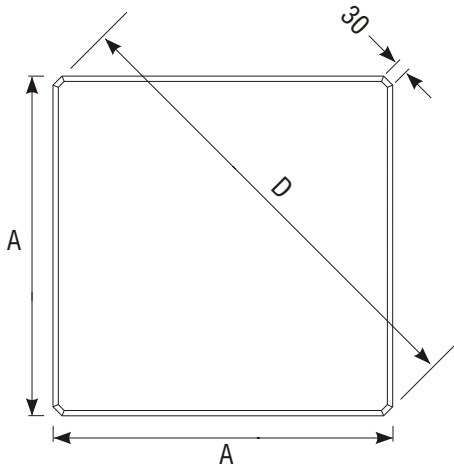
We would be pleased to perform computer design and economy calculations to DIN standards for you. Just contact us!



# Measurements

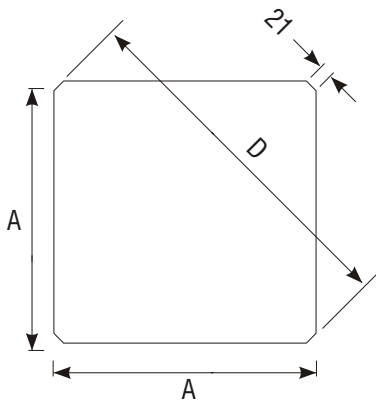


## Type PWT 400 - 1000



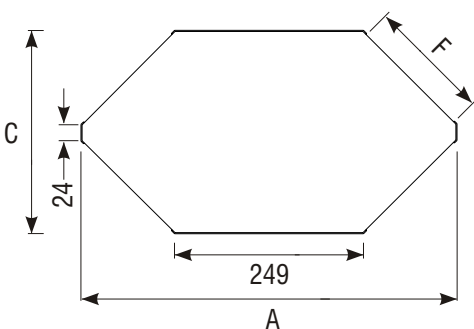
| Type     | A [mm] | D [mm] |
|----------|--------|--------|
| PWT 400  | 400    | 536    |
| PWT 500  | 500    | 677    |
| PWT 600  | 600    | 819    |
| PWT 700  | 700    | 960    |
| PWT 800  | 800    | 1101   |
| PWT 1000 | 1000   | 1384   |
| PWT 1200 | 1200   | 1667   |
| PWT 1400 | 1400   | 1950   |
| PWT 1600 | 1600   | 2233   |

## Type PWT 200 - 390



| Type    | A [mm] | D [mm] |
|---------|--------|--------|
| PWT 200 | 200    | 265    |
| PWT 300 | 300    | 405    |
| PWT 390 | 390    | 531    |

## Type GS 25 - 45



| Type  | A [mm] | C [mm] | F [mm] |
|-------|--------|--------|--------|
| GS 25 | 455    | 230    | 135    |
| GS 30 | 496    | 271    | 159    |
| GS 35 | 537    | 312    | 193    |
| GS 45 | 619    | 394    | 246    |
| GS 62 | 758    | 533    | 347    |